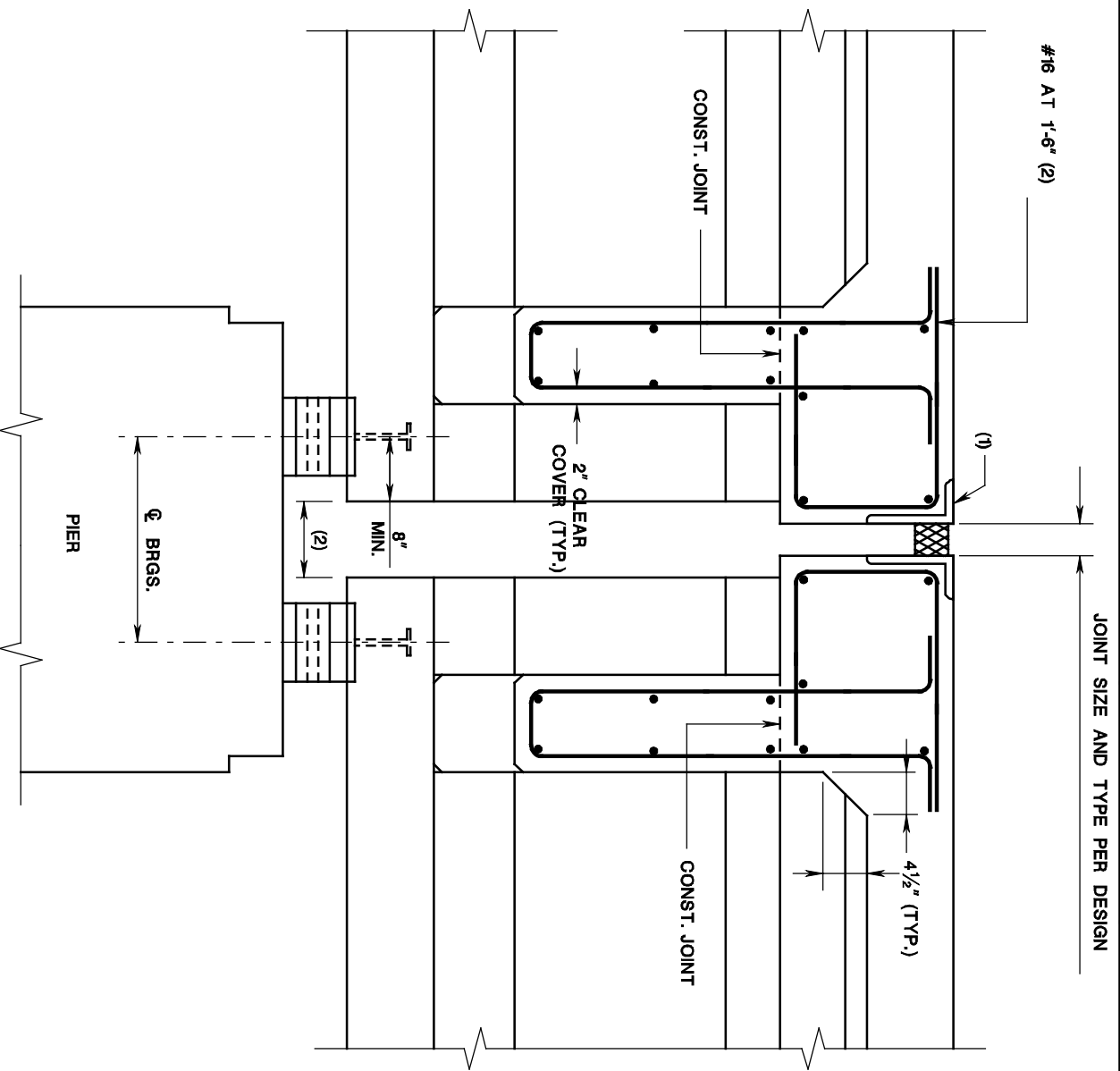


SECTION AT PIER, PC I-BEAMS

ISSUED: 2009

PLATE
3.10-2



NOTES:

1. THE MINIMUM CLEARANCE BETWEEN THE ENDS OF FASCIA BEAMS SHALL BE 3'.
2. THE #16 BARS IN THE HAUNCH BETWEEN BEAMS SHALL BE LAPPED TO THE TOP LONGITUDINAL REINFORCEMENT AND SHALL BE CORROSION PROTECTED.